

DuroMaxx[®] – The Next Generation of Irrigation Pipe

DuroMaxx reinforced irrigation pipe from Contech Engineered Solutions provides an effective and economical solution for low head water transmission used in irrigation ditch enclosure lines. The combination of pressure rated Polyethylene Resin (PE) with steel reinforcing ribs provides exceptional performance and ease of installation.

Higher Flow Rates

High flow rates are achieved with a smooth polyethylene waterway wall. Target flow rates can be assured with DuroMaxx by contacting your local Contech sales engineer for the appropriate information. Mannings “n” values will range between 0.011 to 0.013.

Lighter Weight

DuroMaxx pipe is lightweight which means it can be easily and quickly handled and installed, often eliminating the need to use heavy construction equipment. As the two main cost drivers to install water conveyance products are manpower and machinery, DuroMaxx provides an opportunity to save in both, resulting in less overall spending.

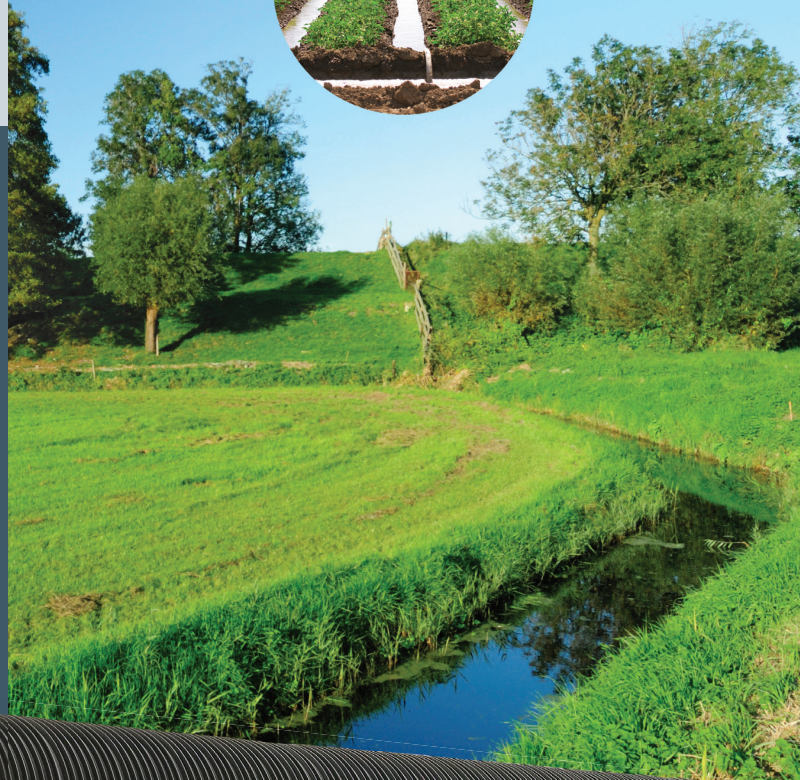
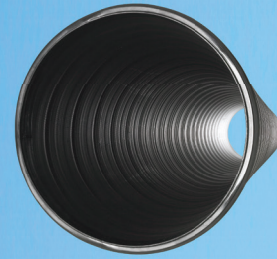
Key Advantages

- Sustainable watertight pressure capabilities
- Lower total installed cost

100-Year Gravity Flow Capabilities 50-Year Pressurized Service Period

Diameters (in)	9 Months	Continuous (50 years)
30-42	9.5 psi	6.75 psi
48-60	12.0 psi	8.5 psi
72-120	15.0 psi*	15.0 psi

* The use of welded coupler (WC) joints may allow for higher pressure.





Barker Ranch, WA



East Columbia Basin, WA



Yakima Teton Irrigation District, WA



Watertight Joints (Steel Reinforced)

The DuroMaxx joint is designed to meet, exceed and maintain the highest standards of performance when tested in accordance with ASTM D3212. DuroMaxx's QuikJoint® with UHP Technology provides an ultra-high-performance (UHP) joint with a double gasket and a triple-thick 80 ksi steel reinforced bell and spigot—to ensure a fast, efficient installation with an enhanced new joint capable of in-ground psi testing. For lower performance applications, 3 psi low head (LH) or soil tight (ST) joints are available. Welded coupler (WC) joints, tested to 30 psi, are also an option.

Longer Lengths: Fewer Joints

DuroMaxx pipe is manufactured in standard 14 and 24 foot lengths (longer lengths available) with bell and spigot joints. It can be provided on an as needed basis in varying lengths in plain end or with bell and spigot joints. Fewer joints to assemble on site equals a faster and more economical installation.

Fittings

DuroMaxx pipe is available with a full range of fabricated fittings such as elbows, tees, wyes, slope junctions and reducers. Both standard and custom fittings can be readily fabricated, which can result in fewer concrete structures and lower project costs.

Sizes

Available in diameters up to 120 inches, DuroMaxx can be installed per the ASTM specification D2321. Contech A-2000™ pipe is available if smaller sizes (4" - 36") are needed.

For more information, call 800.338.1122 or visit our web site: www.ContechES.com.

NOTHING IN THIS CATALOG SHOULD BE CONSTRUED AS A WARRANTY. APPLICATIONS SUGGESTED HEREIN ARE DESCRIBED ONLY TO HELP READERS MAKE THEIR OWN EVALUATIONS AND DECISIONS, AND ARE NEITHER GUARANTEES NOR WARRANTIES OF SUITABILITY FOR ANY APPLICATION. CONTECH MAKES NO WARRANTY WHATSOEVER, EXPRESS OR IMPLIED, RELATED TO THE APPLICATIONS, MATERIALS, COATINGS, OR PRODUCTS DISCUSSED HEREIN. ALL IMPLIED WARRANTIES OF MERCHANTABILITY AND ALL IMPLIED WARRANTIES OF FITNESS FOR ANY PARTICULAR PURPOSE ARE DISCLAIMED BY CONTECH. SEE CONTECH'S CONDITIONS OF SALE (AVAILABLE AT WWW.CONTECHES.COM/COS) FOR MORE INFORMATION.

