

Water Polisher Up-Flow Media Filter



The experts you need to solve your stormwater challenges



Contech is the leader in stormwater solutions, helping engineers, contractors and owners with infrastructure and land development projects throughout North America.

With our responsive team of stormwater experts, local regulatory expertise and flexible solutions, Contech is the trusted partner you can count on for stormwater management solutions.

Your Contech Team



STORMWATER CONSULTANT

It's my job to recommend the best solution to meet permitting requirements.



STORMWATER DESIGN ENGINEER

I work with consultants to design the best approved solution to meet your project's needs.



REGULATORY MANAGER

I understand the local stormwater regulations and what solutions will be approved.



SALES ENGINEER

I make sure our solutions meet the needs of the contractor during construction.

Contech is your partner in stormwater management solutions



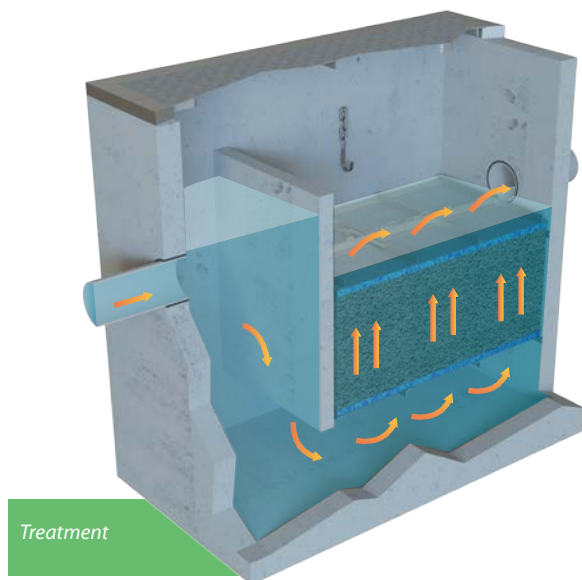
Water Polisher - An Advanced Stormwater Treatment Solution

This efficient up-flow media filter with built-in pretreatment removes large-to-fine sediments from stormwater runoff.

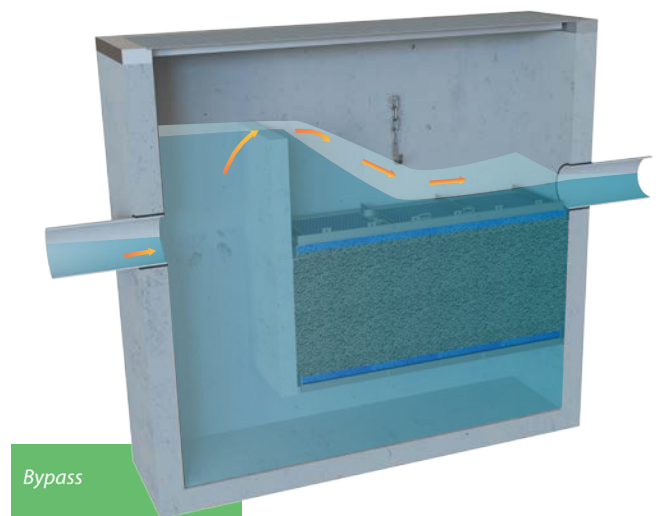
The Contech Water Polisher is an advanced stormwater treatment system utilizing an up-flow media filter with built-in pretreatment. This patented design provides dual chambered separation to remove large to fine sediments from stormwater runoff.

The up-flow filter assembly is constructed for superior durability and longevity, and is a favored solution among civil engineers, municipalities, and developers for its ease of maintenance and integrated internal bypass.

How the Water Polisher Works



As water enters the system, head pressure builds behind the internal weir where sediment settles and driving head is created. Water then passes under the weir into the up-flow filter chamber. As water rises, it is forced through the media filtration bed for primary treatment before exiting the system.



During peak flows, the internal weir allows water to bypass treatment eliminating the need for an external bypass or junction structure.

Dual-chambered design provides higher removals of pollutants

Water Polisher Features and Benefits

FEATURE	BENEFIT
Dual-stage treatment system: separation and media filtration	Enhanced TSS removal while extending the life of the filter bed offering superior pollutant removal
Unimpeded high-flow path	In-line installation eliminates the need for a diversion structure
Easy access doors on top of filtration bed	Ease of maintenance



APPLICATION TIPS

- Ideal for sites with limited drop
- Great solution for nitrogen and phosphorus removal

Water Polisher Applications

The Water Polisher is commonly used in the following stormwater applications:

- Stormwater quality control – trash, debris, sediment, and hydrocarbon removal
- Urban retrofit and redevelopment
- Pretreatment for reuse systems and detention/infiltration systems



The Water Polisher is accessible and can be maintained from the finish surface.

Water Polisher Performance Testing Results

POLLUTANT OF CONCERN	% REMOVAL EFFICIENCY
Total Suspended Solids (TSS)	92.8%
Total Phosphorus (TP)	80.0%
Total Nitrogen (TN)	50.0%
Total Copper (TCu)	73.5%
Total Zinc (TZn)	84.0%

Sources:

Pinnellas County, FL - Third Party Independent Field Testing, 2023



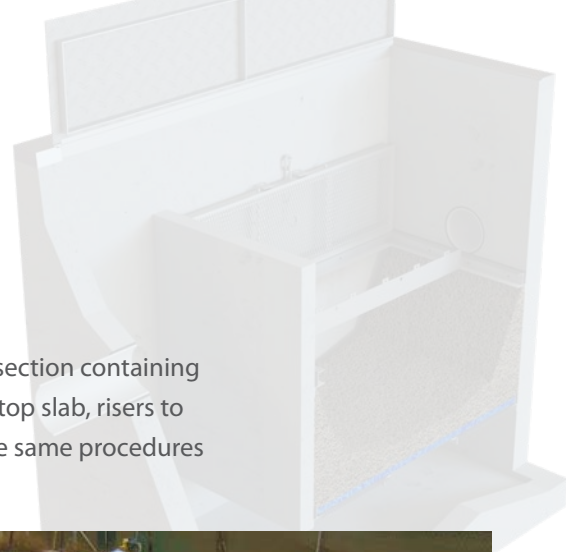
Water Polisher System Sizing

MODEL #	TREATMENT CAPACITY (CFS) ¹	TOTAL SEDIMENT STORAGE CAPACITY (CU. FT.)
WP-4-4	0.09	40
WP-4-8	0.21	76
WP-6-12	0.52	150
WP-6-15	0.68	177
WP-8-14	0.83	224

1. Based on a loading rate of 4 gpm/sq ft media surface area.

Water Polisher Installation

Installation of the Water Polisher is quick and easy. The system is composed of a base section containing preinstalled internals and openings for pipe connections, riser section(s), if needed, a top slab, risers to bring access to finished grade, and access covers. Installation of the system follows the same procedures as a standard precast vault installation.



Shallow sump requires minimal excavation beneath the structure. Internal components are typically installed prior to delivery. Larger units may have internal components installed on site.



Units are frequently installed within a one-hour set time.

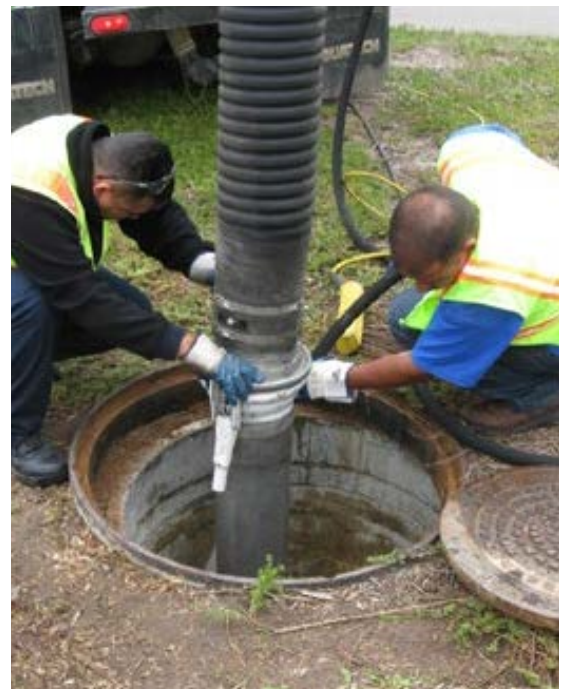
Water Polisher Maintenance

Maintenance can be conducted above ground with a standard vacuum truck through a manhole or hatch.

Sediment and hydrocarbons are removed prior to entering the up-flow filter chamber to minimize maintenance costs.

The up-flow filter is designed with easy-to-open access doors for quick media replacement. Spent media can be removed with a vac truck and replaced by hand.

Contech has a network of Certified Maintenance Providers to provide maintenance on the Water Polisher and other stormwater BMP's.



The Water Polisher is accessible and can be maintained from the finish surface.

A partner you can rely on



STORMWATER
SOLUTIONS



PIPE
SOLUTIONS



STRUCTURES
SOLUTIONS

Few companies offer the wide range of high-quality stormwater resources you can find with us — state-of-the-art products, decades of expertise, and all the maintenance support you need to operate your system cost-effectively.

THE CONTECH WAY

Contech® Engineered Solutions provides innovative, cost-effective site solutions to engineers, contractors, and developers on projects across North America. Our portfolio includes bridges, drainage, erosion control, retaining wall, sanitary sewer and stormwater management products.

TAKE THE NEXT STEP

For more information: www.ContechES.com

NOTHING IN THIS CATALOG SHOULD BE CONSTRUED AS A WARRANTY. APPLICATIONS SUGGESTED HEREIN ARE DESCRIBED ONLY TO HELP READERS MAKE THEIR OWN EVALUATIONS AND DECISIONS, AND ARE NEITHER GUARANTEES NOR WARRANTIES OF SUITABILITY FOR ANY APPLICATION. CONTECH MAKES NO WARRANTY WHATSOEVER, EXPRESS OR IMPLIED, RELATED TO THE APPLICATIONS, MATERIALS, COATINGS, OR PRODUCTS DISCUSSED HEREIN. ALL IMPLIED WARRANTIES OF MERCHANTABILITY AND ALL IMPLIED WARRANTIES OF FITNESS FOR ANY PARTICULAR PURPOSE ARE DISCLAIMED BY CONTECH. SEE CONTECH'S CONDITIONS OF SALE (AVAILABLE AT WWW.CONTECHES.COM/COS) FOR MORE INFORMATION.

CONTECH
ENGINEERED SOLUTIONS

Get social with us:



800-338-1122 | www.ContechES.com