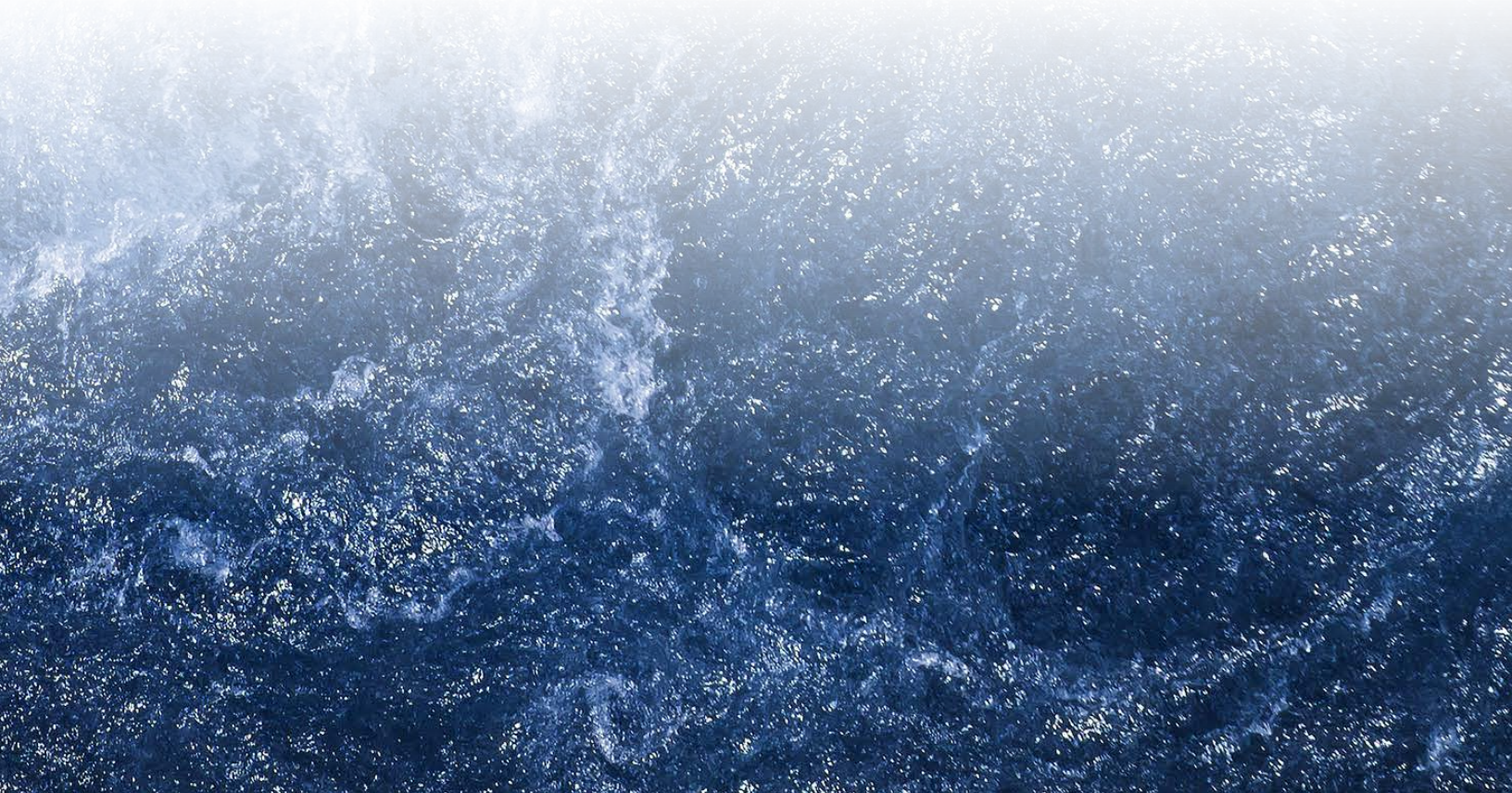
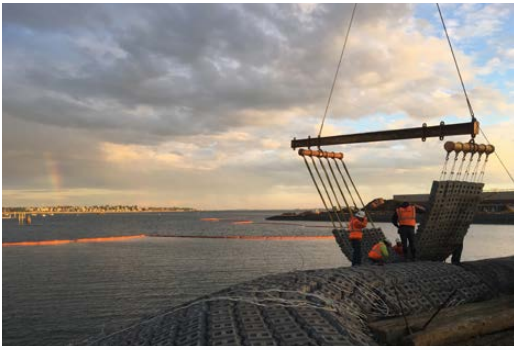




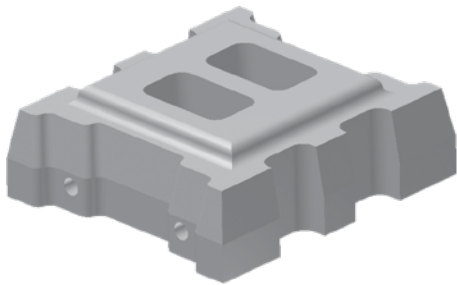
ARMORTEC® HARD ARMOR SOLUTIONS



Armortec® Hard Armor Solutions



Engineered Hard Armor Revetment Systems

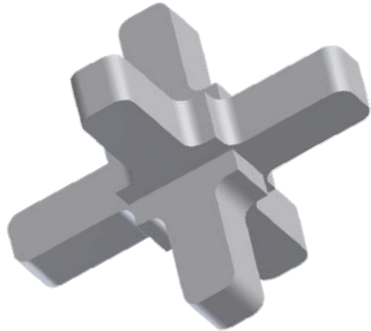


ARMORFLEX® ARTICULATING CONCRETE BLOCKS

- Permanent solution
- Specific hydraulic capacities
- Flexible and interlocking
- Zero soil loss
- Rapid, easy installation

Learn More:

www.ContechES.com/armorflex

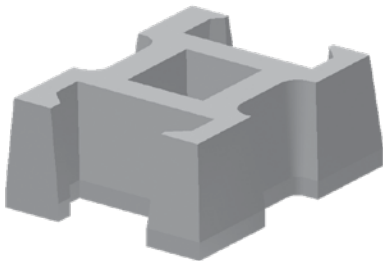


A-JACKS® CONCRETE ARMOR UNITS

- High stability
- Flexible and highly permeable
- Hand-placed or bundle installation
- FHWA design standard
- No dewatering required

Learn More:

www.ContechES.com/a-jacks



HAND PLACED INTERLOCKING REVIEMENT BLOCKS

- Lightweight
- Permeable
- Durable
- Plantable
- Drivable

Learn More:

www.ContechES.com/handplaced

ArmorFlex® Articulating Concrete Blocks (ACB) Applications





DOWNCHUTES



OUTLETS



SPILLWAYS



WEIRS



CONVEYANCE



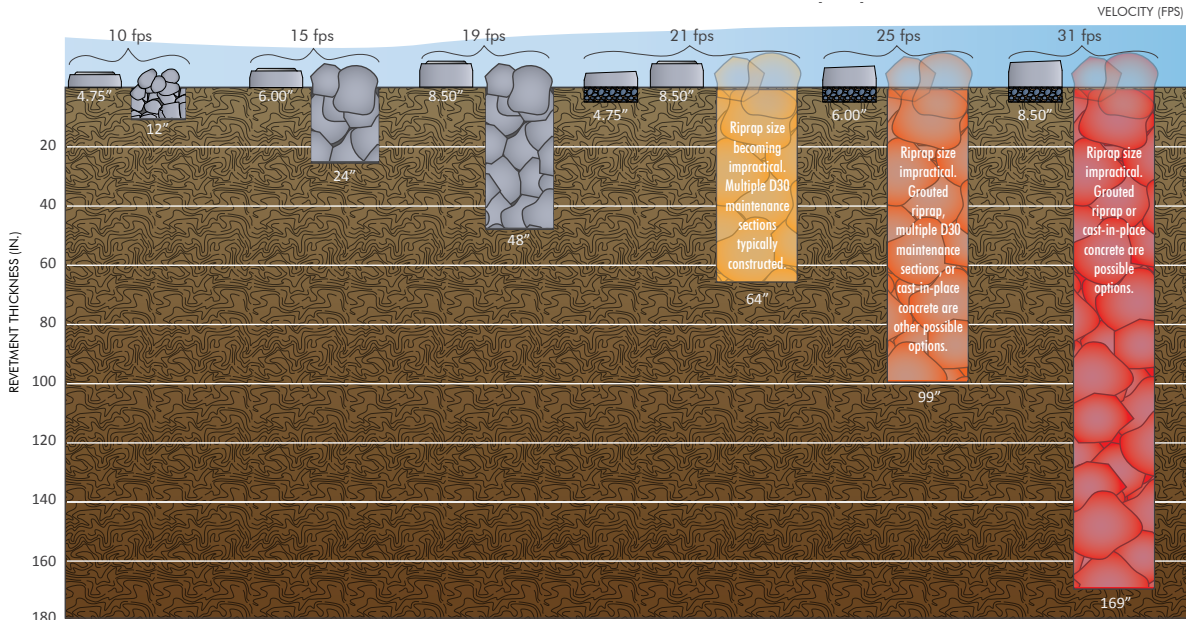
ACCESS ROADS



BOAT RAMPS

ArmorFlex® Design Considerations

ARMORFLEX® ACB VS. TRADITIONAL RIPRAP*



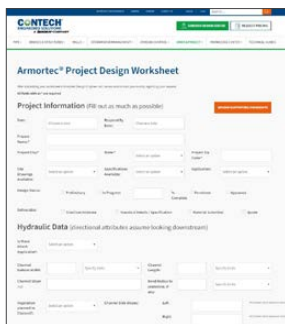
* Assume 4H:1V sideslopes, 2% bedslope, 15ft. bed width, 3ft. flow depth, FS = 1.5

ArmorFlex Non-Tapered ACB, ArmorFlex Tapered ACB, USACE D30 Riprap (Maynard)

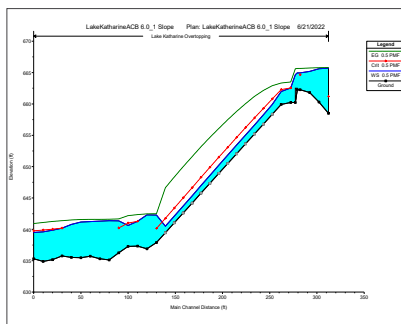


ASTM Flume Tested

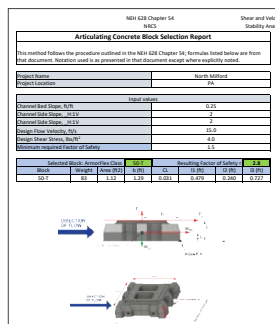
Complete Design Support



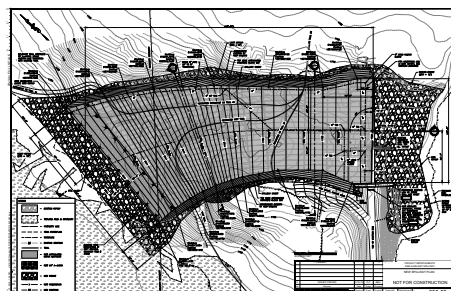
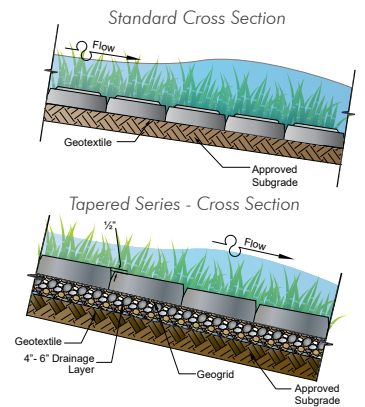
Online Project Design Tools



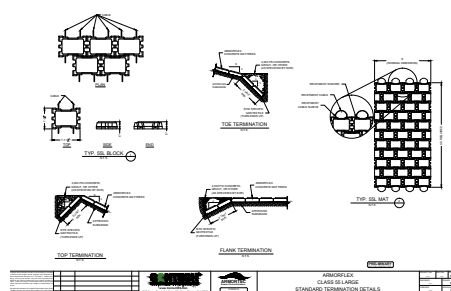
HEC RAS Model Review



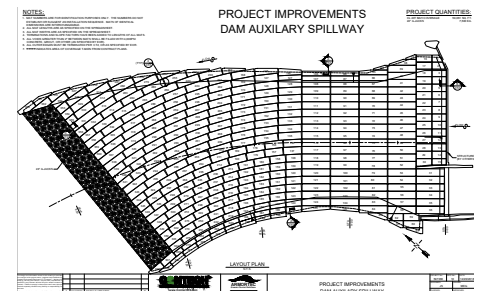
Hydraulic Analysis



Limit Assessment & Site Plan Review



Standard & Project Specific Details



Mat Layout & Installation Support

ArmorFlex® Installation



STEP 1 | SITE PREPARATION

All areas to receive ArmorFlex should be compacted and graded smooth to ensure intimate contact between subgrade, geosynthetics, and ArmorFlex blocks.



STEP 2 | FILTER LAYER

The filter layer should be sized to retain the subgrade soils while still maintaining permeability and can be either a graded granular layer(s) or an appropriate geosynthetic.

If a geosynthetic is utilized, it should be installed in a manner to eliminate folds, wrinkles, and excess tension.



STEP 3 | MAT PLACEMENT/FINISHING

ArmorFlex mats can be installed directly from flat bed trailers or can be staged on-site according to site plans and pre-approved layout drawings.

Additional installation information is available in the ArmorFlex Installation Guide or ASTM D 6884.

A-Jacks® Concrete Armor Units (CAU) Applications



A-Jacks® Installation



Hand-Placed Option

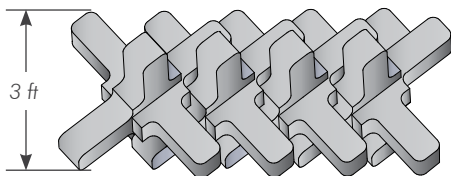


Bundled Option - No Dewatering Required

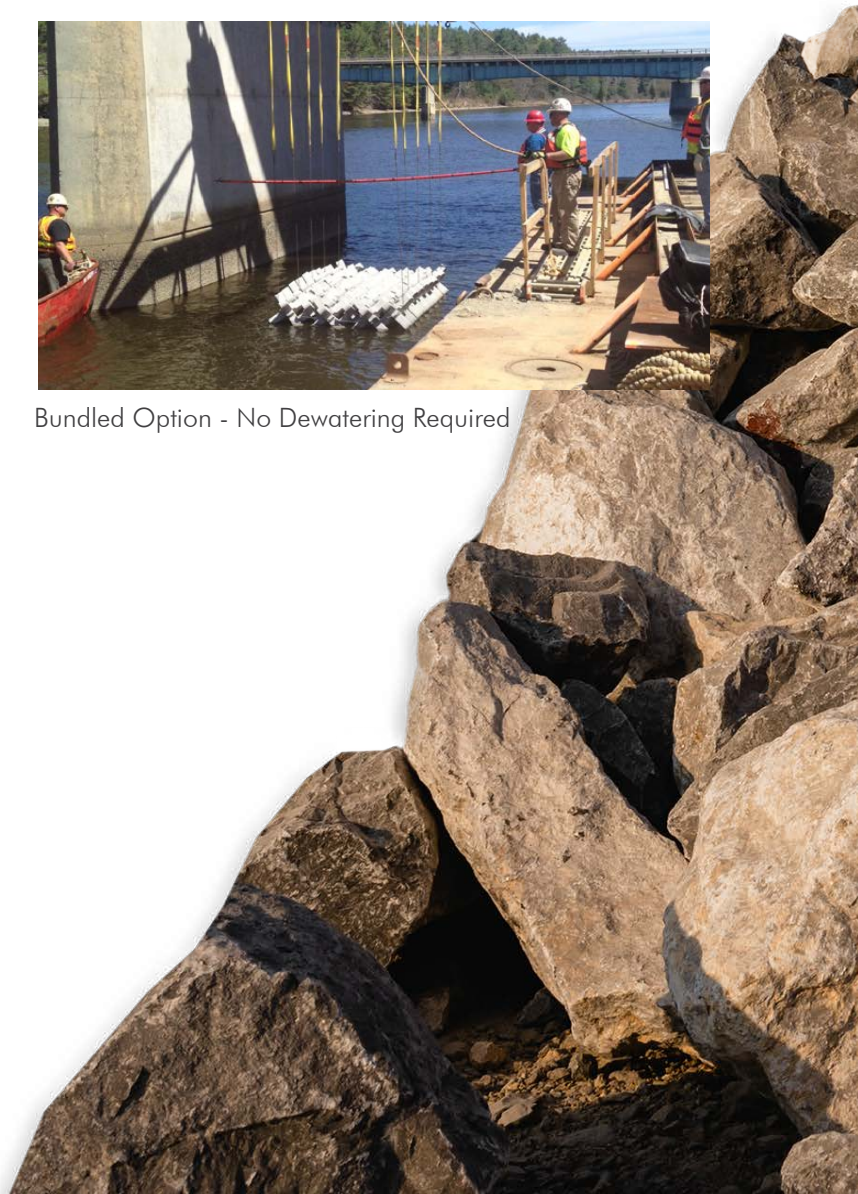
A-Jacks® Design

Utilizing HEC 23 as the basis of design, the Tennessee DOT determined the following equivalent sections for scour protection of an interstate bridge crossing the Mississippi River.

48-inch A-Jack Bundle



29 ft
2 Ton
Class 9
Riprap



Hand Placed Interlocking Revetment Block Applications





Interlocking Revetment Block Installation

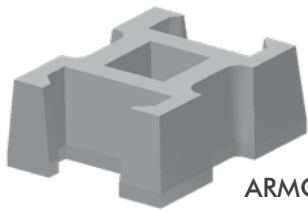


Lightweight & Easy to Install

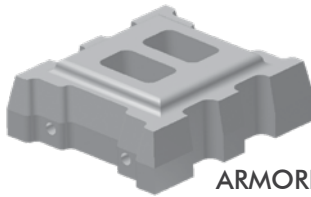


Optional Mechanical Placement

Available Hand Placed Interlocking Revetment Blocks



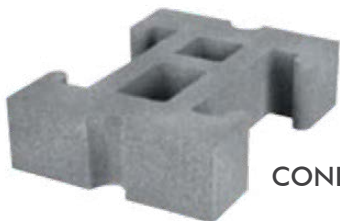
ARMORLOC®



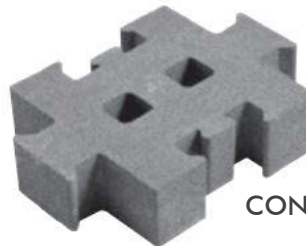
ARMORFLEX®



GEOLINK®



CONLOCK® I



CONLOCK® II



Contech® Engineered Solutions provides innovative, cost-effective site solutions to engineers, contractors and developers on projects across North America. Our portfolio includes bridges, drainage, erosion control, retaining wall, sanitary sewer and stormwater management products.



STORMWATER SOLUTIONS



PIPE SOLUTIONS



STRUCTURE SOLUTIONS



For more information, call one of Contech's Regional Offices located in the following cities:

Corporate Office - Ohio (Cincinnati)	513-645-7000
Colorado (Denver)	720-587-2700
Florida (Orlando)	321-348-3520
Maine (Scarborough)	207-885-9830
Maryland (Baltimore)	410-740-8490
Oregon (Portland)	503-258-3180
Texas (Dallas)	972-590-2000

NOTHING IN THIS CATALOG SHOULD BE CONSTRUED AS A WARRANTY. APPLICATIONS SUGGESTED HEREIN ARE DESCRIBED ONLY TO HELP READERS MAKE THEIR OWN EVALUATIONS AND DECISIONS, AND ARE NEITHER GUARANTEES NOR WARRANTIES OF SUITABILITY FOR ANY APPLICATION. CONTECH MAKES NO WARRANTY WHATSOEVER, EXPRESS OR IMPLIED, RELATED TO THE APPLICATIONS, MATERIALS, COATINGS, OR PRODUCTS DISCUSSED HEREIN. ALL IMPLIED WARRANTIES OF MERCHANTABILITY AND ALL IMPLIED WARRANTIES OF FITNESS FOR ANY PARTICULAR PURPOSE ARE DISCLAIMED BY CONTECH. SEE CONTECH'S CONDITIONS OF SALE (AVAILABLE AT WWW.CONTECHES.COM/COS) FOR MORE INFORMATION.

