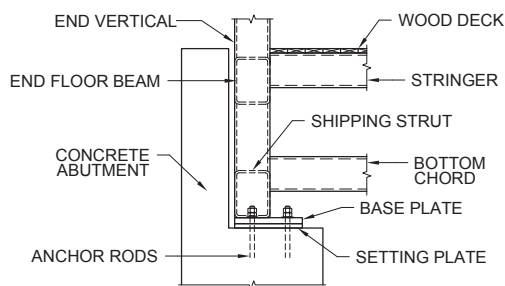
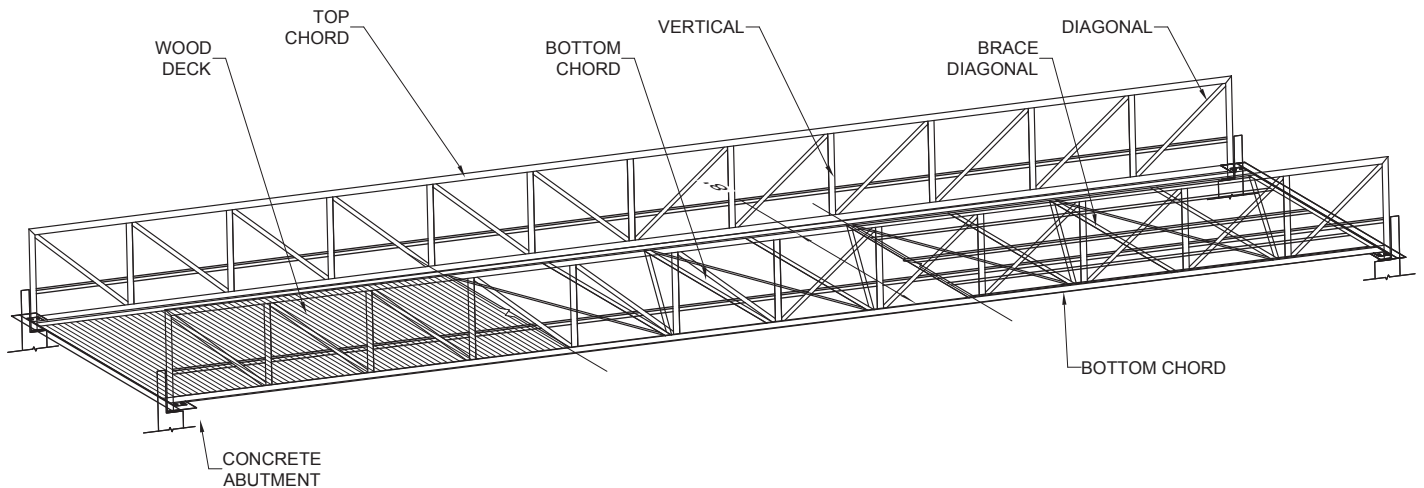
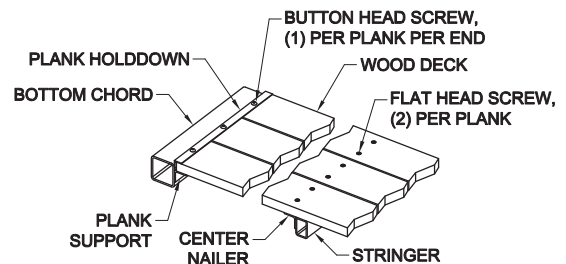


Pedestrian Truss Bridge Details

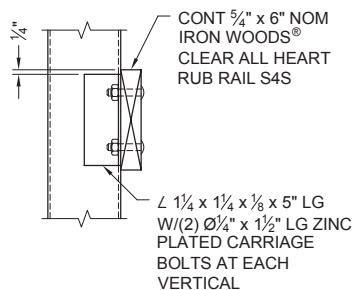


BEARING SIDE VIEW

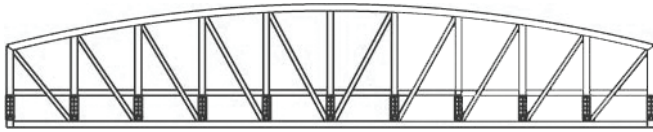
INFORMATION PROVIDED FOR REPRESENTATION ONLY.
ACTUAL BEARING DIAGRAMS TO BE BASED ON FINAL DESIGN.



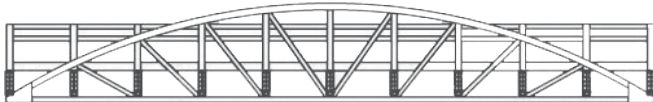
WOOD DECK DETAIL



Typical Truss Styles



Capstone® Modified Bow Truss



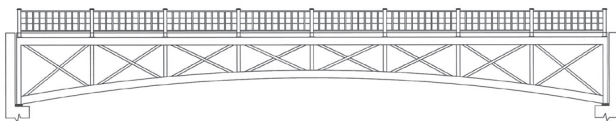
Keystone® Bow Truss



Connector® Standard Truss

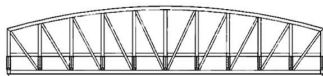


Link® X-Brace Truss



Archway® Underhung Truss

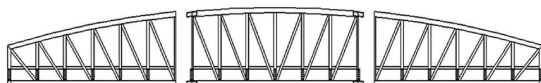
Typical Shipping Splices



Up to 70 feet

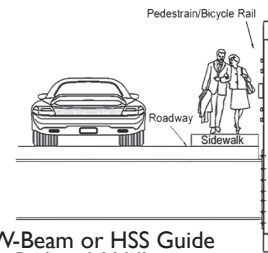


70 feet to 135 feet

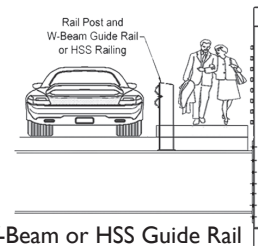


135 feet to 160 feet

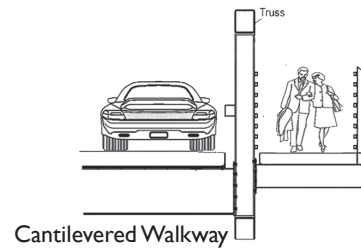
Typical Sidewalk and Railing Arrangements



W-Beam or HSS Guide Rail with Walkway

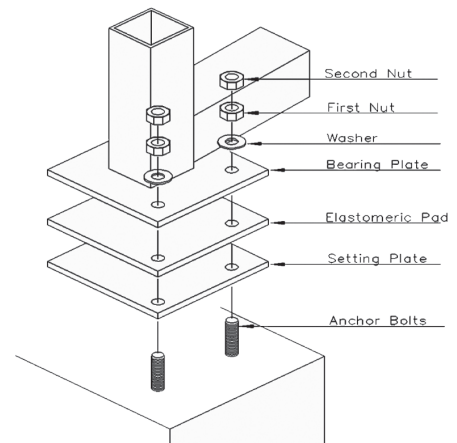


W-Beam or HSS Guide Rail with Post and Walkway

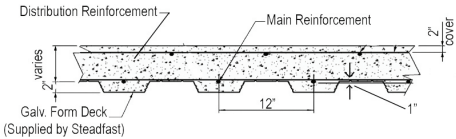


Cantilevered Walkway

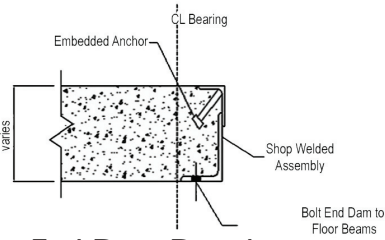
Bearing Details



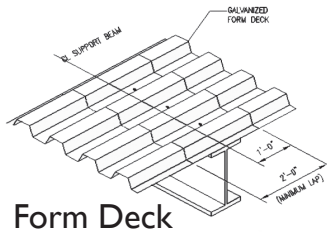
Concrete Floor Connections



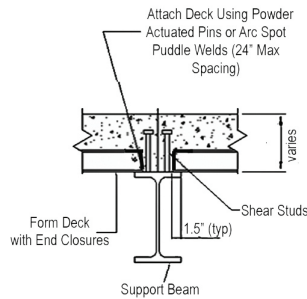
Concrete Deck Reinforcing



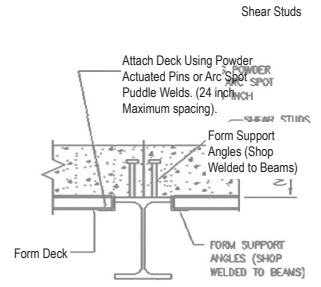
End Dam Detail



Form Deck

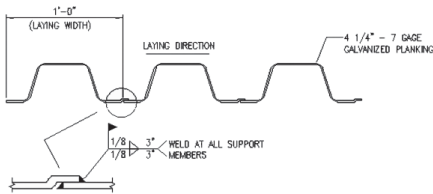


Section View Option #1

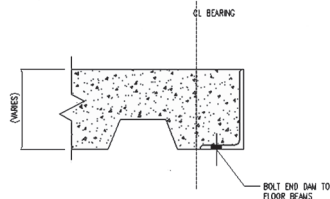


Section View Option #2

Asphalt Floor Connections

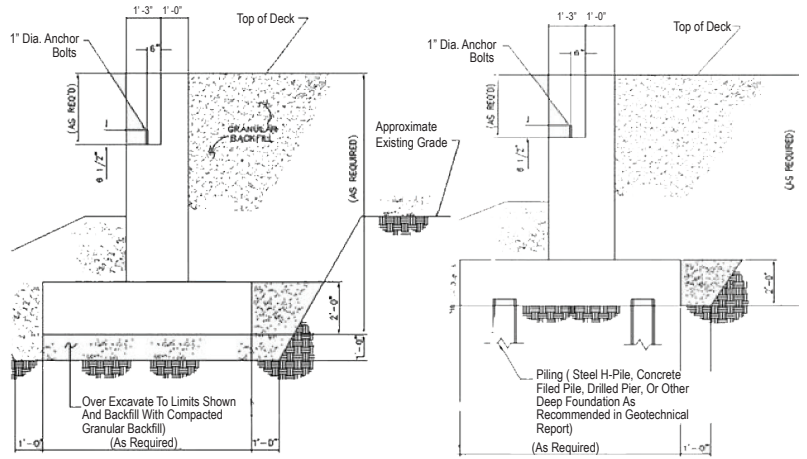


Concrete Deck Reinforcing



End Dam Detail

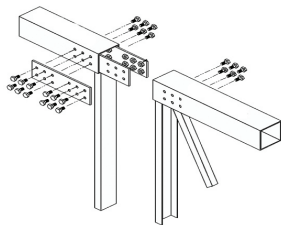
Foundations



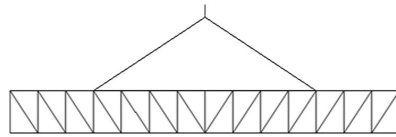
Soil Supported

Pile Supported

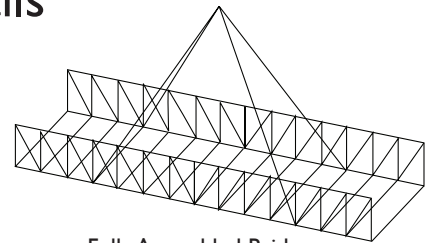
Typical Installation Details



Bolted Splice/Connection Detail

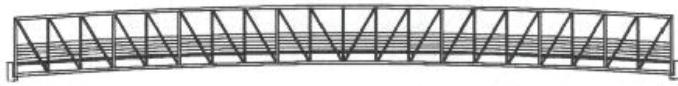


Fully Assembled Truss Only (top chord lift)



Fully Assembled Bridge (bottom panel point)

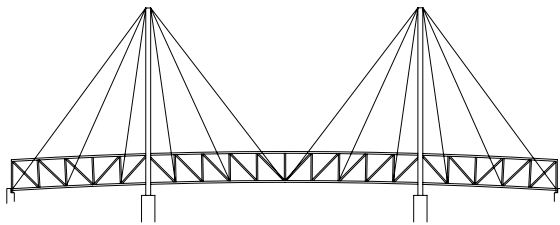
Additional Pedestrian Truss Styles



Gateway®

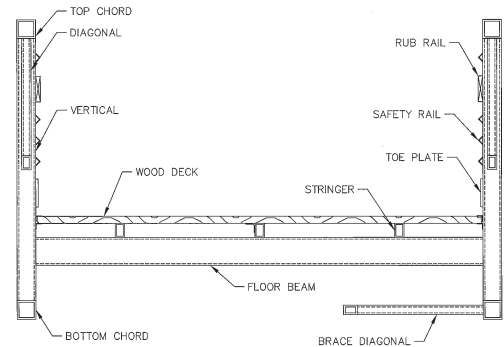


Expressway®

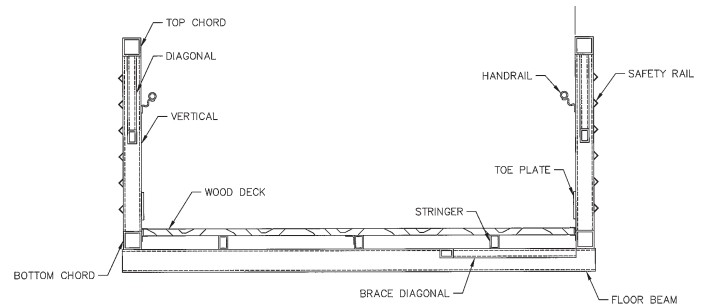


Cable Stayed

Section Views

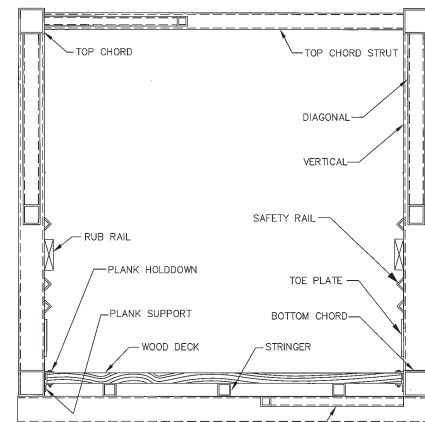
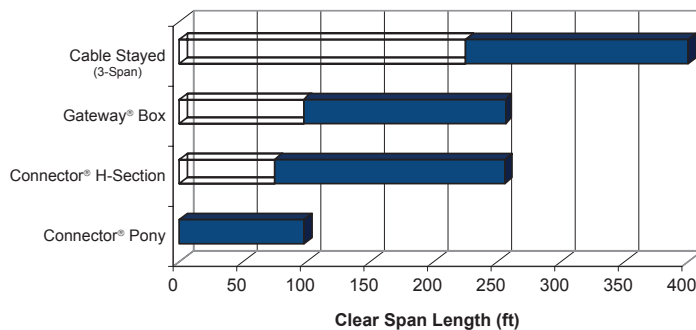


Connector® - H-Section



Connector® - Underhung Floor

Optimum Pedestrian Bridge System Types



Gateway® - Through Box

For Pedestrian Truss Bridges

Material & Finishes:

Steel Types Used (50 ksi material):

- A588 Weathering or A847 (Pedestrian Only)
- A500 Painted (Pedestrian Only)
- A572 Painted (2 Coat and 3 Coat (Zinc Rich Primer) – Any Color)
- A572 Galvanized (35-year Limited Warranty)
- A325 Galvanized or Type 3 Weathering (Bolts Provided)
- A307 Galvanized Anchor Bolts are Specified (By Contractor)

Design Specifications:

- AISC
- AASHTO Standard Specifications for Highway Bridges
- AASHTO Guide Specifications for Pedestrian Bridges
- AWS D1.1, D1.5

Manufacturing/Installation Specifications:

- AISC Shop Certification
 - Fracture Critical Endorsement
 - Sophisticated Paint Endorsement
- AWS



www.ContechES.com • 800-338-1122

© 2012 Contech Engineered Solutions LLC. All rights reserved.